



# GMT MONTHLY MEMBERSHIP PROGRESS REPORT

Results as of: 5/31/2020

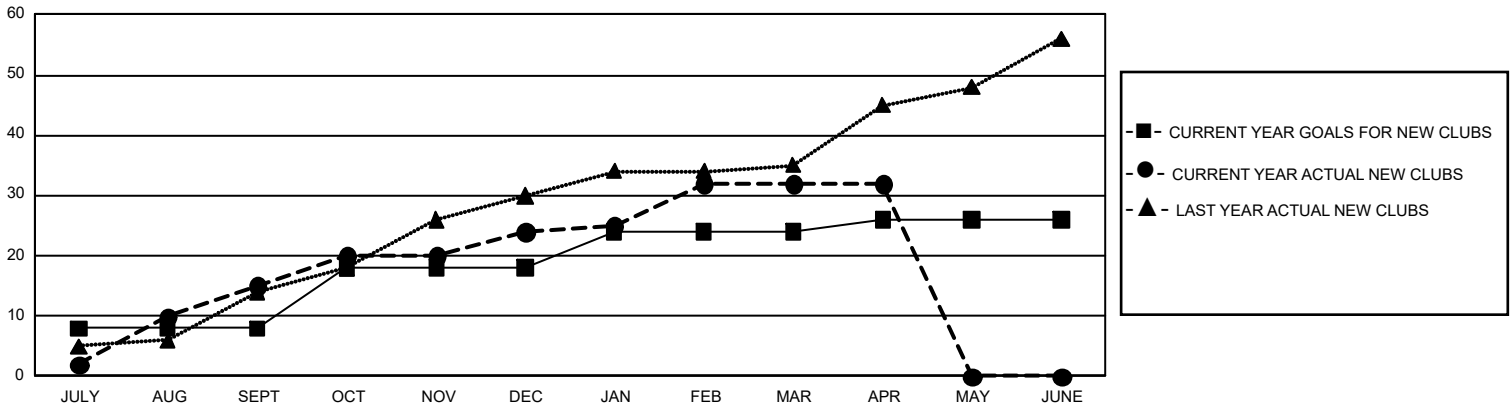
## GMT Constitutional Area 5 - E, Group N

GMT: OPEN

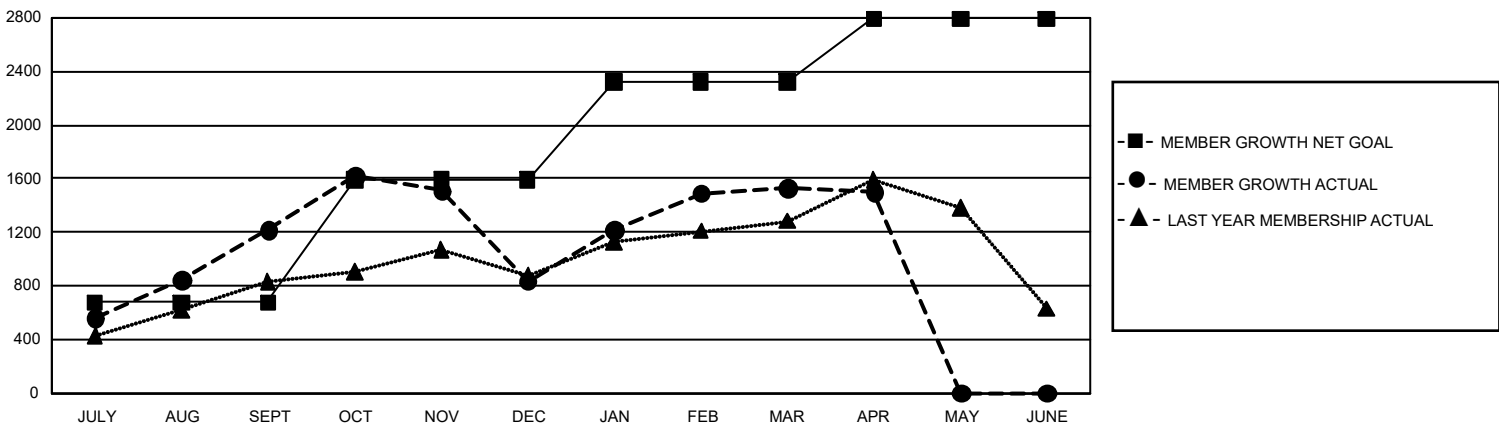
REPORT DOES NOT INCLUDE CLUBS IN UNDISTRICTED AREAS.

Clubs				Members			
RESULTS FOR 2019-2020				RESULTS FOR 2019-2020			
QUARTER	NEW CLUB GOAL	NEW CLUBS	DROPPED CLUBS	QUARTER	MEMBER GROWTH NET GOAL	MEMBER GROWTH ACTUAL	DROPPED MEMBERS ACTUAL (including transfers)
JULY/AUG/SEPT	24	15	7	JULY/AUG/SEPT	2,025	2,146	796
OCT/NOV/DEC	30	9	8	OCT/NOV/DEC	2,745	816	1,142
JAN/FEB/MAR	18	8	6	JAN/FEB/MAR	2,205	999	275
APR/MAY/JUNE	6	0	0	APR/MAY/JUNE	1,410	38	64

GOALS AND ACTUAL NEW CLUBS CUMULATIVE



GOALS AND ACTUAL MEMBERS CUMULATIVE



DROPPED CLUBS: 21	526 CLUBS OF 771 ADDED 1 OR MORE NEW MEMBERS	<u>GENDER DISTRIBUTION</u>	
<u>DROPPED MEMBERS</u>		MALE	16,271 (69.47%)
DECEASED	<a href="#">CLICK HERE FOR CUMULATIVE MEMBERSHIP DATA</a>	FEMALE	7,149 (30.53%)
CLUB CANCELLED		TOTAL FAMILY UNIT MEMBERS	2,763
OTHER		FAMILY MEMBERS PAYING HALF DUES	1,541
<b>TOTAL</b>			